



Ettiksoft

Talent Innovation Solution



**Seeking
State-of-the-Art
Cybersecurity
Solutions
for any
type of Vehicle?**





CYMAS: Comprehensive Automotive Cybersecurity Management System

Key Capabilities:

- 🔑 Compliance with ISO/SAE 21434 & UNECE WP.29.
- 🔑 SBOM Management including supply chain.
- 🔑 Threat Intelligence & Incident Response .
- 🔑 Continuous Security Monitoring & Reporting.

Why CYMAS?

- 🔑 End-to-End Cybersecurity Lifecycle Management.
- 🔑 Integrated Risk & Compliance Dashboard.
- 🔑 AI-Powered Anomaly Detection.

AutoPentrix: Precision Penetration Testing for Automotive Security

Key Capabilities:

- 🔑 Automotive-Specific PEN Testing.
- 🔑 Attack Surface Analysis.
- 🔑 Exploit Simulation & Risk Validation.
- 🔑 Compliance with PTES Standards.

Why AutoPentrix?

- 🔑 Automotive-Centric Testing Approach.
- 🔑 Advanced Exploitation Techniques.
- 🔑 Industry Compliance & Regulatory Support.



E-SUMO: Software Update System & Remote Vehicle Monitoring

Key Capabilities:

- 🔑 Over-the-Air (OTA) Software Updates.
- 🔑 Real-Time System Monitoring.
- 🔑 Update Validation & Rollback Mechanism.

Why E-SUMO?

- 🔑 End-to-End Security.
- 🔑 Seamless Integration.
- 🔑 Scalability & Cloud-Based Management.





Sec-En-Pro-HSM: Secure Cryptography Software Stack for HSM

Key Capabilities:

- 🔑 Hardware Security Module (HSM) Integration.
- 🔑 Cryptographic Algorithm Support.
- 🔑 Secure Boot & Firmware Protection.
- 🔑 ISO 21434 & UNECE WP.29 Compliance.

Why Sec-En-Pro-HSM?

- 🔍 Optimized for Automotive ECUs.
- 🔍 Tamper-Resistant Security Framework.
- 🔍 Seamless Integration with AUTOSAR.

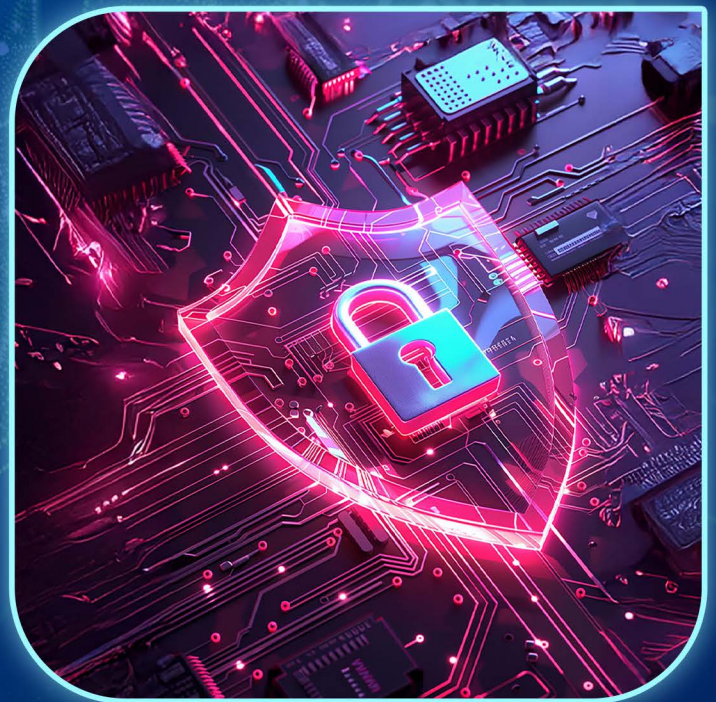
CyberBoot: Secure Bootloader for Automotive Software Updates

Key Capabilities:

- 🔑 Authenticated Boot Process.
- 🔑 Firmware Over-the-Air (FOTA) & Secure Updates.
- 🔑 Cryptographic Validation & Code Signing.
- 🔑 ISO 21434 & UNECE WP.29 Compliance.

Why CyberBoot?

- 🔍 Prevents Unauthorized Code Execution.
- 🔍 Secure Key Management.
- 🔍 Seamless Integration with HSM & AUTOSAR.



Cyphera: Intelligent Risk Assessment for Automotive Security

Key Capabilities:

- 🔑 Vehicle Threat Modeling.
- 🔑 Attack Vector Analysis.
- 🔑 Risk Assessment & Prioritization.
- 🔑 ISO/SAE 21434 Compliance Reporting & Audit Support.

Why Choose Cyphera?

- 🔍 Model-Based Approach.
- 🔍 In-Built Threat Catalog & Automotive-Specific Libraries.
- 🔍 Automatic Risk Calculations & Visual Representation.





“TRUSTED WORLDWIDE!”

**Ettiksoft Technologies
Private Limited**

 +91 88700 68883

 www.ettiksoft.com

 sales@ettiksoft.com

